

Insulin Reservoir

Serbatoio per Insulina / Réservoir d'insuline / Insulinbehälter / Insuliinisäiliö / Insulinreservoir / Reservorio de Insulina

REF MTM-3



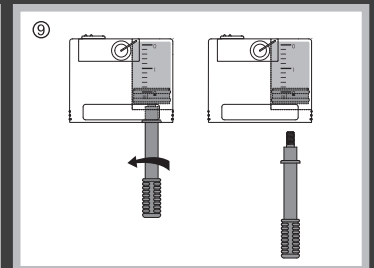
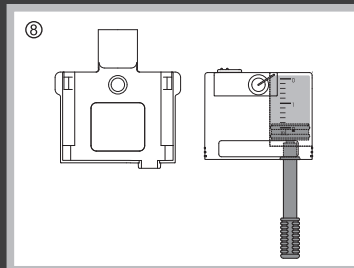
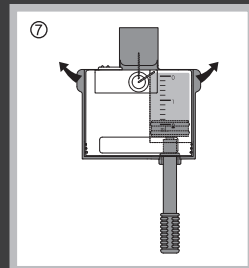
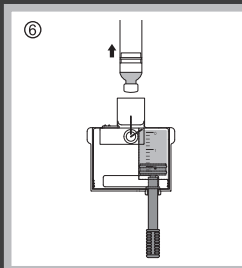
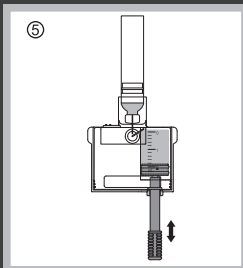
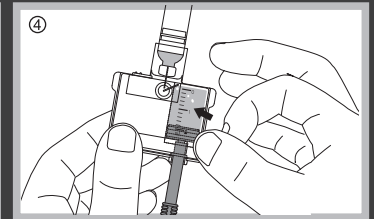
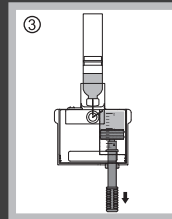
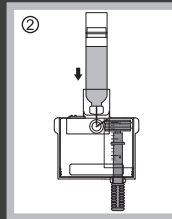
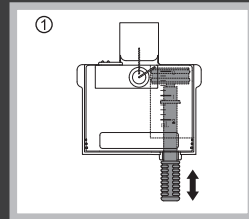
MicroTech Medical (Hangzhou) Co., Ltd.
No.108 Liuze St., Cangqian, Yuhang District,
Hangzhou, 311121 Zhejiang, P.R.China
www.microtechmd.com

EC REP Lotus NL B.V.
Koningin Julianaplein 10, 1e Verd,
2595AA, The Hague, Netherlands.

1001-PMTL-158. V02



EN For use with the Equil Patch Insulin Pump System
IT Da utilizzare con la pompa adesiva per insulina Equil
FR Pour une utilisation avec le système de la pompe à insuline Equil Patch
GE Zur Verwendung mit dem Equil Patch Insulinpumpensystem
FI Käytävä Equil-insuliinipumppujärjestelmän kanssa
SV För användning med Equil Patch Insulinpumpsystem
ES Para su uso con el Sistema Equil de Bomba de Parche de Insulina



English

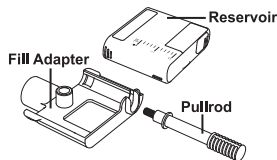
Product Name: Ambulatory Insulin Infusion Pump Reservoir
REF: MTM-3
Shelf Life: 3 years
Manufacturer Date: Check label on box

1. Purpose

The Equil Reservoir is a component of the Equil patch insulin pump system and is used to store insulin. The sterilized reservoir should be used with the Equil patch pump and disposable infusion set produced by MicroTech Medical.

2. Components

The Reservoir package consists of a reservoir, fill adapter and pullrod, as shown in the figure below:



The total capacity of the reservoir is 2.0ml, which is equal to 200 units of U-100 insulin.

3. Indications

This product is indicated for the subcutaneous infusion of insulin using the Equil Patch Insulin Pump (MTM-1).

4. Contraindications

- ① Use only with U-100 insulin.
- ② Cannot be used for storage or infusion of blood or blood products.

5. Application

This disposable product is compatible with the Equil Patch Insulin Pump System and is suitable for treating diabetes requiring short-term or long-term insulin pump therapy.

6. Usage

- ① Remove the new reservoir from the packaging.
- ② Use the pullrod to pull the piston to the full position inside the reservoir, then push it completely to the empty position. Repeat this three times ending with the piston in the empty position as in Figure 1.
- ③ Use an alcohol wipe to clean the insulin vial and then attach it to the fill adapter as in Figure 2.
- ④ With the insulin vial on top, slowly pull the pullrod and draw insulin into the reservoir as in Figure 3.
- ⑤ Tap the side of the reservoir to encourage any air bubbles to rise to the top of the reservoir (Figure 4).

⑥ Push the pullrod slowly to eject the bubbles back into the vial, and then slowly pull to draw more insulin into the reservoir. Repeat until the reservoir has enough insulin and there are no air bubbles (Figure 5).

⑦ Remove the insulin vial from the fill adapter (Figure 6).

⑧ Pull the two release tabs (shown in Figure 7) away from the reservoir to release the fill adapter.

⑨ Remove the pullrod by unscrewing it counterclockwise (Figure 8).

Please refer to the Pump System and Reservoir user guides for information pertaining to those components.

7. Warnings

The Reservoir is a sterile, non pyrogenic disposable product. It has been sterilized using ethylene oxide. Do not reuse or disinfect. Do not use if the package has been opened or damaged.

Please use only Reservoirs that are produced by MicroTech Medical.

Please discard the Fill Adapter in an appropriate sharps container.

Excess air in the Reservoir may cause inaccurate delivery of insulin. Eject as much air as possible.

It is suggested that the product should be changed every three days.

8. Notes

Insulin should be at room temperature before filling the Reservoir.

Use immediately after filling. Do not store insulin in the Reservoir when the Reservoir is not in use.

This product should be used under the guidance of doctors or other healthcare professionals. It can be used in a home or hospital environment after proper training. If you are a new user, you should prepare your first reservoir with professional help.

Please read this insert carefully before use and follow the directions. Read the Pump and Infusion Set user guides carefully as well.

9. Storage Condition

This product should be stored in a non corrosive gas, cool, dry, well ventilated area. Avoid storing with a chlorinated disinfectant.

10. Symbol List

Single Use Only		Sterilized by Ethylene Oxide	
Caution		Read Instructions	
Expiration Date		Do Not Use if Package is Damaged	
Lot Number		Manufacture Date	
		Manufacturer	